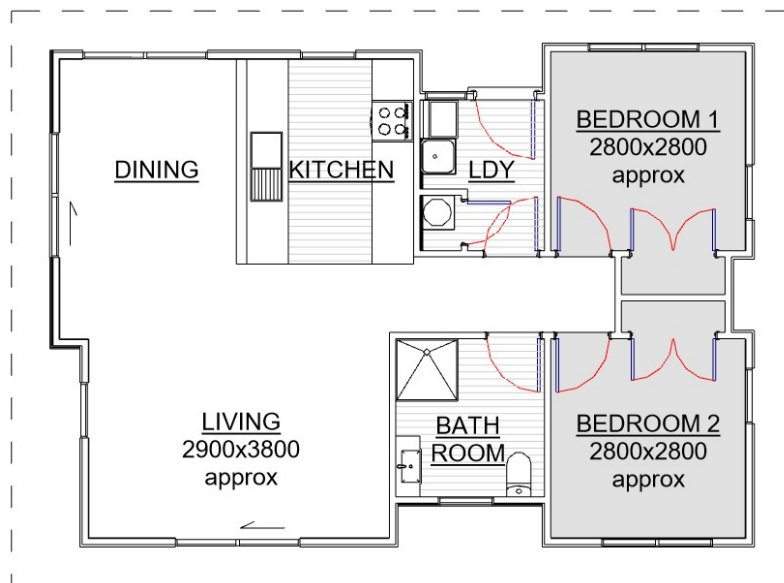


# THE TAIPU

AREA 67 SQ MTRS



**BRANDERSON HOMES LTD**

TEL: 07 827 3901

EMAIL: [branderson@brandersonhomes.co.nz](mailto:branderson@brandersonhomes.co.nz)

WEBSITE: [www.brandersonhomes.co.nz](http://www.brandersonhomes.co.nz)

SHOW-HOME / OFFICE: 37 HAUTAPU ROAD CAMBRIDGE

POSTAL ADDRESS: PO BOX 434 CAMBRIDGE 3450

Note: 3D images are artists impression only

# SPECIFICATIONS

Please note that these specifications are the standard for our on-site build homes.

Each contracted build can be individually tailored to meet your needs do please do not hesitate to suggest any changes you may have in mind.

## DOCUMENTS INCLUDED

WAIPA DISTRICT COUNCIL BUILDING PERMIT, PLANS & SPECS PROVIDED  
PLANS, SPEC & CALCULATIONS SUPPLIED FOR RECEIVING COUNCIL. ENGINEERS REPORT NOT INCLUDED

## EXTERIOR

### SUBFLOOR

## DECORATION IS CLIENT CARE

TIMBER SUBFLOOR AS PER NZS 3604:2011 - FOUNDATIONS ARE BASED ON LEVEL OF SITE TO NZS 3604:2011

### EXTERIOR CLADDING

HARDIES 240 SMOOTH WEATHERBOARD OR HARDIES AXON PANELS

### FRAMING

90 x 45 H1.2 TREATED

### FLOORING

20MM PARTICLE BOARD FLOORING

### FASCIA

PRE PRIMED TIMBER FASCIA

### ROOFING

LONG RUN COLOURSTEEL CORRUGATED IRON OR STYLELINE PROFILE.

### WINDOWS

TASMAN POWDER COATED DOUBLE GLAZED ALUMINIUM JOINERY  
IF APPLICABLE FRONT DOOR WILL BE POWDER COLOUR COATED TO SUIT

## INTERIOR

### DOOR HARDWARE

## DECORATION IS CLIENT CARE

WINDSOR FUTURA APEX LEVER RANGE

### DOORS

PRE-HUNG HUME PRIMECOAT MDF FLUSH IN SLIMLINE JAMBS & DOORSTOPS—GROOVED STYLE OPTIONAL

### LININGS

ELEPHANT 10MM PLASTERBOARD & ELEPHANT 10MM AQUABOARD

### PLASTERING

LEVEL 4 - PAINT FINISH

### CORNICE

75mm GIB COVE CLASSIC

### SKIRTING

60mm FJ BEVELLED EDGE & 60mm FJ PINE ARCHITRAVES

### SHELING

16mm WHITE PBD / LUMBERLOK CLOSET RAILS / 112x18mm FJ PINE SLATS IN H.W.C

## INSULATION

### CEILINGS

EARTHWOOL R3.2 (MIN)

### WALLS

EARTHWOOL R2.3

### UNDERFLOOR

EXPOL UNDERFLOOR R1.4

## BATHROOM

### SHOWER

ACRYLIC SHOWER UNIT - SIZE & SHAPE DICTATED BY PLAN

### TOILET

RAYMORE CLOSE COUPLED

### BATH

FREESTANDING BTW FIBERGLASS UNIT

### VANITIES

CERAMIC TOPPED UNITS, SUPPLIED & INSTALLED—WALL HUNG OR FLOOR MOUTED

### TAPWARE

RAYMORE RANGE

### TOWEL RAIL

HEATED

### HEAT UNIT

2KW WALL MOUNTED HEATER

### EXTRACTION UNIT

FAN/LIGHT UNIT

## KITCHEN

### JOINERY

PRIME MELAMINE or BESTWOOD MELTECCA, WATER-RESISTANT CARCASES

### HARDWARE

HERITAGE HARDWARE RANGE

### BENCHTOPS

PRIME LAMINATE or FORMICA RANGE

### SINK

STAINLESS STEEL PERO 800

## APPLIANCES

### STOVE

BOSCH ELECTRIC FREESTANDING WITH CERAMIC COOKTOP

### OVEN

BOSCH ELECTRIC UNDERBENCH OVEN

### HOB

BOSCH 4 ELEMENT CERAMIC COOKTOP

### EXTRACTION UNIT

BOSCH POWERPACK EXTRACTOR or ROBINHOOD RANGEHOOD

## LAUNDRY

### TUB

RAYMOR E6200

## WATER HEATER

ELECTRIC 180L MAINS PRESSURE CYLINDER

## ELECTRICAL

FIT-OUT COMPLETE USING LED LIGHTING. METER BOX INCLUDED

## PLUMBING

COMPLETED AND TESTED (NO SITE CONNECTIONS)

Excluding structural building materials, all products mentioned may differ occasionally subject to availability and/or compatibility. When this is the case, the substitute product will always be of equal quality. All product warranties are subject to the distributors and/or manufacturers policies.

**BRANDERSON HOMES LTD**