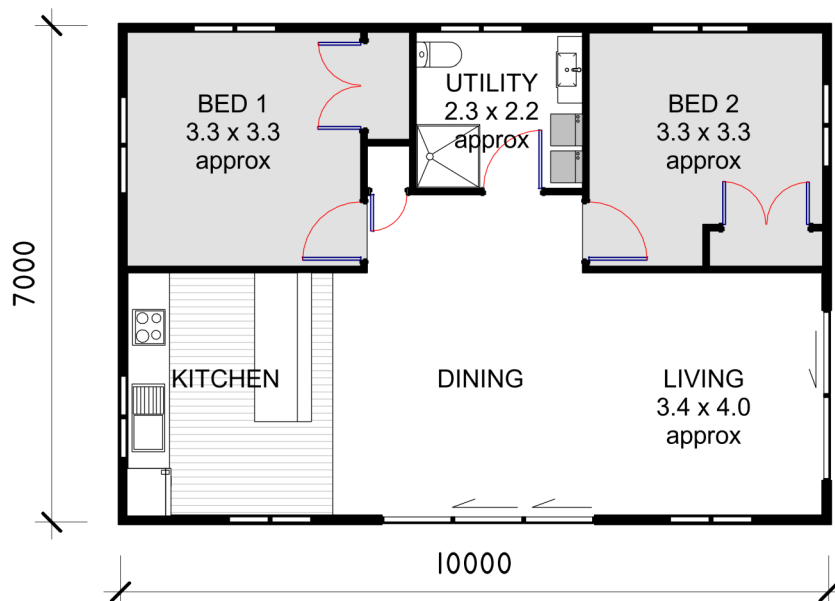


# THE VIEW

AREA 70 m<sup>2</sup>



phone: 07 827 3901

email: [branderson@brandersonhomes.co.nz](mailto:branderson@brandersonhomes.co.nz)

web: [www.brandersonhomes.co.nz](http://www.brandersonhomes.co.nz)

show home / office: 47 Hautapu Road, Cambridge

postal: PO Box 434 Cambridge 3450

Note: 3D images are artists impression only



# SPECIFICATIONS

Each contracted build can be individually tailored to meet your needs. Please do not hesitate to suggest any changes you may have in mind.

## ALL PRICES INCLUDE TRANSPORT AND FOUNDATION ALLOWANCES

### DOCUMENTS INCLUDED

ALL PLANS AND SPECIFICATIONS FOR BUILDING CONSENT PURPOSES, FOR BOTH WAIPA & RECEIVING COUNCIL INCLUDED. \* GEOTECH REPORT NOT INCLUDED

### EXTERIOR

#### SUBFLOOR

TIMBER SUBFLOOR AS PER NZS 3604:2011 - FOUNDATIONS ARE BASED ON LEVEL OF SITE TO NZS3604:2011

#### EXTERIOR CLADDING

BGC NULINE WEATHERBOARD OR HARDIES AXON PANELS

#### FRAMING

90 x 45 H1.2 TREATED

#### FASCIA

PRE PRIMED TIMBER FASCIA

#### ROOFING

DIAMOND LONG RUN COLOURSTEEL CORRUGATED IRON OR STYLINE PROFILE.

#### WINDOWS

TASMAN POWDER COATED DOUBLE GLAZED ALUMINIUM JOINERY  
IF APPLICABLE FRONT DOOR WILL BE POWDER COLOUR COATED TO SUIT

### INTERIOR

#### FLOORING

20MM PARTICLE BOARD FLOORING

#### DOOR HARDWARE

WINDSOR FUTURA APWX LEVER RANGE

#### DOORS

PRE-HUNG HUME PRIMECOAT MDF FLUSH IN SLIMLINE JAMBS & DOORSTOPS

#### LININGS

ELEPHANT 10MM PLASTERBOARD & ELEPHANT 10MM AQUABOARD

#### PLASTERING

LEVEL 4 - PAINT FINISH

#### CORNICE

75mm GIB COVE CLASSIC

#### SKIRTING

60mm FJ BEVELLED EDGE & 60mm FJ PINE ARCHITRAVES

#### SHELVING

16mm WHITE PBD / LUMBERLOK CLOSET RAILS / 112x18mm FJ PINE SLATS IN H.W.C

### INSULATION

#### CEILINGS

EARTHWOOL R6.6

#### WALLS

EARTHWOOL R2.6

#### FLOOR

EXPOL UNDERFLOOR R2.5 (MIN)

### BATHROOM

#### SHOWER

ACRYLIC SHOWER UNIT - SIZE & SHAPE DICTATED BY PLAN

#### TOILET

RAYMORE ATLANTA

#### BATH

FREESTANDING BTW FIBERGLASS UNIT

#### VANITIES

CERAMIC TOPPED UNITS, SUPPLIED & INSTALLED

#### TAPWARE

RAYMORE RANGE

#### TOWEL RAIL

HEATED

#### HEAT UNIT

2KW WALL MOUNTED HEATER

#### EXTRACTION UNIT

FAN/LIGHT UNIT

### KITCHEN

#### JOINERY

LAMINEX MELTECCA, PRIME MELAMINE OR BESTWOOD MELAMINE. WATER-RESISTANT CARCASES

#### HARDWARE

HERITAGE HARDWARE RANGE

#### BENCHTOPS

PRIME LAMINATE or FORMICA RANGE

#### SINK

FRANKE STAINLESS STEEL LARGE BOWL INSERT

### APPLIANCES

#### STOVE

BOSCH ELECTRIC FREESTANDING WITH CERAMIC COOKTOP

#### OVEN

BOSCH ELECTRIC UNDERBENCH OVEN

#### HOB

BOSCH 4 ELEMENT CERAMIC COOKTOP

#### EXTRACTION UNIT

BOSCH POWERPACK EXTRACTOR or ROBINHOOD RANGEHOOD

### LAUNDRY TUB

RAYMOR E6200

### ELECTRICAL

FIT-OUT COMPLETE USING LED LIGHTING. METER BOX INCLUDED

### PLUMBING

COMPLETED AND TESTED

### WATER HEATER

ELECTRIC 180L MAINS PRESSURE CYLINDER

### DECORATION OPTION

DECORATION OPTION INCLUDES EXTERNAL / INTERNAL PAINT, CARPET, VINYL & SPLASHBACKS  
SUBJECT TO YOUR SELECTION

Excluding structural building materials, all products mentioned may differ occasionally subject to availability and/or compatibility. When this is the case, the substitute product will always be of equal quality. All product warranties are subject to the distributors and/or manufacturers policies.

**BRANDERSON  
HOMES LTD**