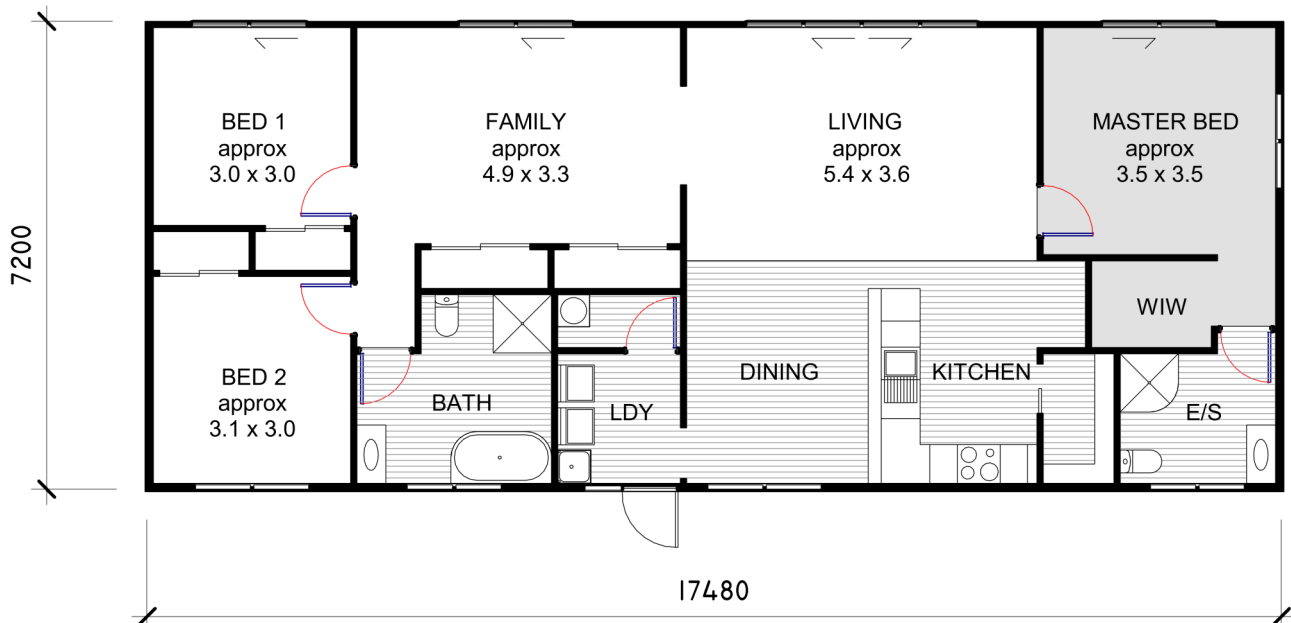


THE PALETHORPE

AREA 125 m²



phone: 07 827 3901

email: branderson@brandersonhomes.co.nz

web: www.brandersonhomes.co.nz

show home / office: 47 Hautapu Road, Cambridge

postal: PO Box 434 Cambridge 3450

Note: 3D images are artists impression only



SPECIFICATIONS

Each contracted build can be individually tailored to meet your needs. Please do not hesitate to suggest any changes you may have in mind.

ALL PRICES INCLUDE TRANSPORT AND FOUNDATION ALLOWANCES

DOCUMENTS INCLUDED

ALL PLANS AND SPECIFICATIONS FOR BUILDING CONSENT PURPOSES, FOR BOTH WAIPA & RECEIVING COUNCIL INCLUDED. * GEOTECH REPORT NOT INCLUDED

EXTERIOR

| | |
|-------------------|---|
| SUBFLOOR | TIMBER SUBFLOOR AS PER NZS 3604:2011 - FOUNDATIONS ARE BASED ON LEVEL OF SITE TO NZS3604:2011 |
| EXTERIOR CLADDING | BGC NULINE WEATHERBOARD OR HARDIES AXON PANELS |
| FRAMING | 90 x 45 H1.2 TREATED |
| FASCIA | PRE PRIMED TIMBER FASCIA |
| ROOFING | DIAMOND LONG RUN COLOURSTEEL CORRUGATED IRON OR STYLINE PROFILE. |
| WINDOWS | TASMAN POWDER COATED DOUBLE GLAZED ALUMINIUM JOINERY IF APPLICABLE FRONT DOOR WILL BE POWDER COLOUR COATED TO SUIT |

INTERIOR

| | |
|---------------|---|
| FLOORING | 20MM PARTICLE BOARD FLOORING |
| DOOR HARDWARE | WINDSOR FUTURA APWX LEVER RANGE |
| DOORS | PRE-HUNG HUME PRIMECOAT MDF FLUSH IN SLIMELINE JAMBS & DOORSTOPS |
| LININGS | ELEPHANT 10MM PLASTERBOARD & ELEPHANT 10MM AQUABOARD |
| PLASTERING | LEVEL 4 - PAINT FINISH |
| CORNICE | 75mm GIB COVE CLASSIC |
| SKIRTING | 60mm FJ BEVELLED EDGE & 60mm FJ PINE ARCHITRAVES |
| SHELVING | 16mm WHITE PBD / LUMBERLOK CLOSET RAILS / 112x18mm FJ PINE SLATS IN H.W.C |

INSULATION

| | |
|----------|-----------------------------|
| CEILINGS | EARTHWOOL R6.6 |
| WALLS | EARTHWOOL R2.6 |
| FLOOR | EXPOL UNDERFLOOR R2.5 (MIN) |

BATHROOM

| | |
|-----------------|---|
| SHOWER | ACRYLIC SHOWER UNIT - SIZE & SHAPE DICTATED BY PLAN |
| TOILET | RAYMORE ATLANTA |
| BATH | FREESTANDING BTW FIBERGLASS UNIT |
| VANITIES | CERAMIC TOPPED UNITS, SUPPLIED & INSTALLED |
| TAPWARE | RAYMORE RANGE |
| TOWEL RAIL | HEATED |
| HEAT UNIT | 2KW WALL MOUNTED HEATER |
| EXTRACTION UNIT | FAN/LIGHT UNIT |

KITCHEN

| | |
|-----------|---|
| JOINERY | LAMINEX MELTECCA, PRIME MELAMINE OR BESTWOOD MELAMINE. WATER-RESISTANT CARCASES |
| HARDWARE | HERITAGE HARDWARE RANGE |
| BENCHTOPS | PRIME LAMINATE or FORMICA RANGE |
| SINK | FRANKE STAINLESS STEEL LARGE BOWL INSERT |

APPLIANCES

| | |
|-----------------|--|
| STOVE | BOSCH ELECTRIC FREESTANDING WITH CERAMIC COOKTOP |
| OVEN | BOSCH ELECTRIC UNDERBENCH OVEN |
| HOB | BOSCH 4 ELEMENT CERAMIC COOKTOP |
| EXTRACTION UNIT | BOSCH POWERPACK EXTRACTOR or ROBINHOOD RANGEHOOD |

LAUNDRY TUB

RAYMOR E6200

ELECTRICAL

FIT-OUT COMPLETE USING LED LIGHTING. METER BOX INCLUDED

PLUMBING

COMPLETED AND TESTED

WATER HEATER

ELECTRIC 180L MAINS PRESSURE CYLINDER

DECORATION OPTION

DECORATION OPTION INCLUDES EXTERNAL / INTERNAL PAINT, CARPET, VINYL & SPLASHBACKS
SUBJECT TO YOUR SELECTION

Excluding structural building materials, all products mentioned may differ occasionally subject to availability and/or compatibility. When this is the case, the substitute product will always be of equal quality. All product warranties are subject to the distributors and/or manufacturers policies.

**BRANDERSON
HOMES LTD**